

Master-PUR HX EL

Article Master No.: 000159

PU Suction & Transport Hose, flexible, highly abrasion-proof and vacuum-proof, electroconductive



antistatic



electrically
conductive



moderately
flexible



heavy



very pressure
resistant

Product Details

Construction / Material

- Type of construction: profile extruded hose with metal spiral
- Spiral Design: made of steel wire
- Material of the spiral: spring steel
- Execution of the wall: made of electrically conductive material / made of specified material / extremely abrasion resistant due to specific reinforcement underneath the spiral / wall thickness between the spirals approx. 2.0 mm
- Material of the wall: polyester polyurethane
- Specifications of the wall: surface resistance $R_0 < 10^3$ Ohm
- Specifications of the inner layer: smooth inner lining for optimized flow characteristics

Properties

- Specifications of the product: complies with DIN 26057 Type IV / according to TRGS 727 and ATEX 2014/34 EU
- Chemical Properties: good resistance to chemicals / good UV resistance / good resistance to oil / good resistance to petrol / good ozone resistance
- Flexibility: moderately flexible
- Weight: heavy
- Pressure Resistance: very pressure resistant
- Colour: black

- Other: high vacuum and peak pressure resistance

Operating Temperature

- Temperature Range: -40 to 90 °C
- short-term maximum temperature: peaks to 125 °C

Delivery Information

- Delivery, type of production: various nominal widths in standard lengths are available ex-production, individual nominal widths and lengths also ex-stock

Application Areas

- Areas of application: Surface Technology

Customizing Options

- optional item modification (on request): other lengths / other nominal widths / with customer-specific imprint

Article Variants

Extended Article Number	Nominal Size (DN) mm	Outer diameter mm	Bending radius* mm	Weight kg/m	Operating pressure bar	Negative pressure bar	Max. Production length m	Stock Lengths m	Length (standard lengths available for order) m
000159:32:x	32	42	/	0.69	4.85	0.94	20.00	/	5 / 10 / 15 / 20
000159:38:x	38	48	130	0.78	4.39	0.94	20.00	/	5 / 10 / 15 / 20
000159:40:x	40	50	140	0.81	4.27	0.94	20.00	/	5 / 10 / 15 / 20
000159:45:x	45	55	160	0.88	4.10	0.94	20.00	/	5 / 10 / 15 / 20
000159:51:x	51	61	170	0.95	4.00	0.94	20.00	/	5 / 10 / 15 / 20
000159:55:x	55	65	190	1.08	3.75	0.89	20.00	/	5 / 10 / 15 / 20
000159:60:x	60	70	210	1.20	3.60	0.89	20.00	/	5 / 10 / 15 / 20
000159:65:x	65	75	230	1.33	3.30	0.89	20.00	/	5 / 10 / 15 / 20
000159:70:x	70	80	240	1.49	3.15	0.89	20.00	/	5 / 10 / 15 / 20
000159:76:x	76	87	260	1.68	2.92	0.89	20.00	/	5 / 10 / 15 / 20
000159:80:x	80	93	270	1.85	2.77	0.89	20.00	/	5 / 10 / 15 / 20
000159:90:x	90	103	310	2.10	2.40	0.89	20.00	/	5 / 10 / 15 / 20
000159:102:x	102	115	340	2.32	2.10	0.87	20.00	/	5 / 10 / 15 / 20
000159:110:x	110	124	380	2.60	1.95	0.87	20.00	/	5 / 10 / 15 / 20
000159:115:x	115	129	400	2.73	1.80	0.87	20.00	/	5 / 10 / 15 / 20
000159:120:x	120	134	410	2.86	1.65	0.87	20.00	/	5 / 10 / 15 / 20
000159:127:x	127	140	430	3.01	1.65	0.87	20.00	/	5 / 10 / 15 / 20
000159:130:x	130	143	440	3.25	1.65	0.84	20.00	/	5 / 10 / 15 / 20
000159:140:x	140	153	480	3.66	1.50	0.83	20.00	/	5 / 10 / 15 / 20
000159:152:x	152	167	610	4.15	1.50	0.82	20.00	/	5 / 10 / 15 / 20
000159:160:x	160	175	680	4.55	1.35	0.81	20.00	/	5 / 10 / 15 / 20
000159:170:x	170	185	810	5.01	1.20	0.80	20.00	/	5 / 10 / 15 / 20
000159:180:x	180	195	950	5.52	1.20	0.77	20.00	/	5 / 10 / 15 / 20
000159:203:x	203	220	1290	6.06	1.05	0.66	15.00	/	5 / 10 / 15
000159:225:x	225	241	1560	6.99	0.90	0.58	10.00	/	5 / 10

Extended Article Number	Nominal Size (DN) mm	Outer diameter mm	Bending radius* mm	Weight kg/m	Operating pressure bar	Negative pressure bar	Max. Production length m	Stock Lengths m	Length (standard lengths available for order) m
000159:250:x	250	263	1760	7.91	0.90	0.52	10.00	/	5 / 10
000159:254:x	254	267	1790	7.91	0.90	0.51	10.00	/	5 / 10
000159:275:x	275	292	1960	8.67	0.75	0.47	10.00	/	5 / 10
000159:300:x	300	317	2160	9.42	0.60	0.42	10.00	/	5 / 10

All data refer to a medium and ambient temperature of +20°C.
 Specification of the bending radius related to the inside of the hose bend
 Subject to technical changes and colour deviations

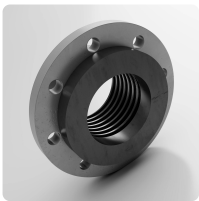
Delivery Variants

Available in other lengths, other nominal diameters, with customer-specific customer-specific imprint.

Disposal instructions

After use, the product must be disposed of in accordance with the legal regulations applicable in the user's region (in Germany in accordance with the applicable Waste Catalogue Ordinance (AVV)).

Suitable for the product



Combiflex PU Swivel Flange

screw-on plastic collar with loose flange for Master-PUR L, Master-PUR H, Master-PUR HX and Master-PUR Performance, for counterflanges acc. to DIN 2632 / DIN 2633 / DIN 2673



Combiflex PU Cone Flange, screwable

screw-on quick connector system for all Master-PUR L, Master-PUR H and Master-PUR HX hose types, following DIN 3016



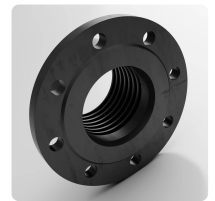
Hose Clamp with Bolts
special clamp for fastening medium and heavy spiral hoses to connection pipes on mobile and stationary units



Hose Clamp with Bolts, Steel quality W4, stainless steel 1.4301
Special clamp for fastening medium and heavy spiral hoses to connection pipes on mobile and stationary units



Combiflex Metal Threaded Sockets
Cast-on threaded connection with external thread according to DIN ISO 228



Combiflex PU Fixed Flange
screw-on plastic flange for Master-PUR L, Master-PUR H, Master-PUR HX and Master-PUR Performance, for counterflanges according to DIN 2632 / DIN 2633 / DIN 2673

Individual consultation

We offer consultation by phone:
+49 209 97077-112

Product requests via masterflex.de/en

Address Headquarters

Masterflex SE
Willy-Brandt-Allee 300
45981 Gelsenkirchen

